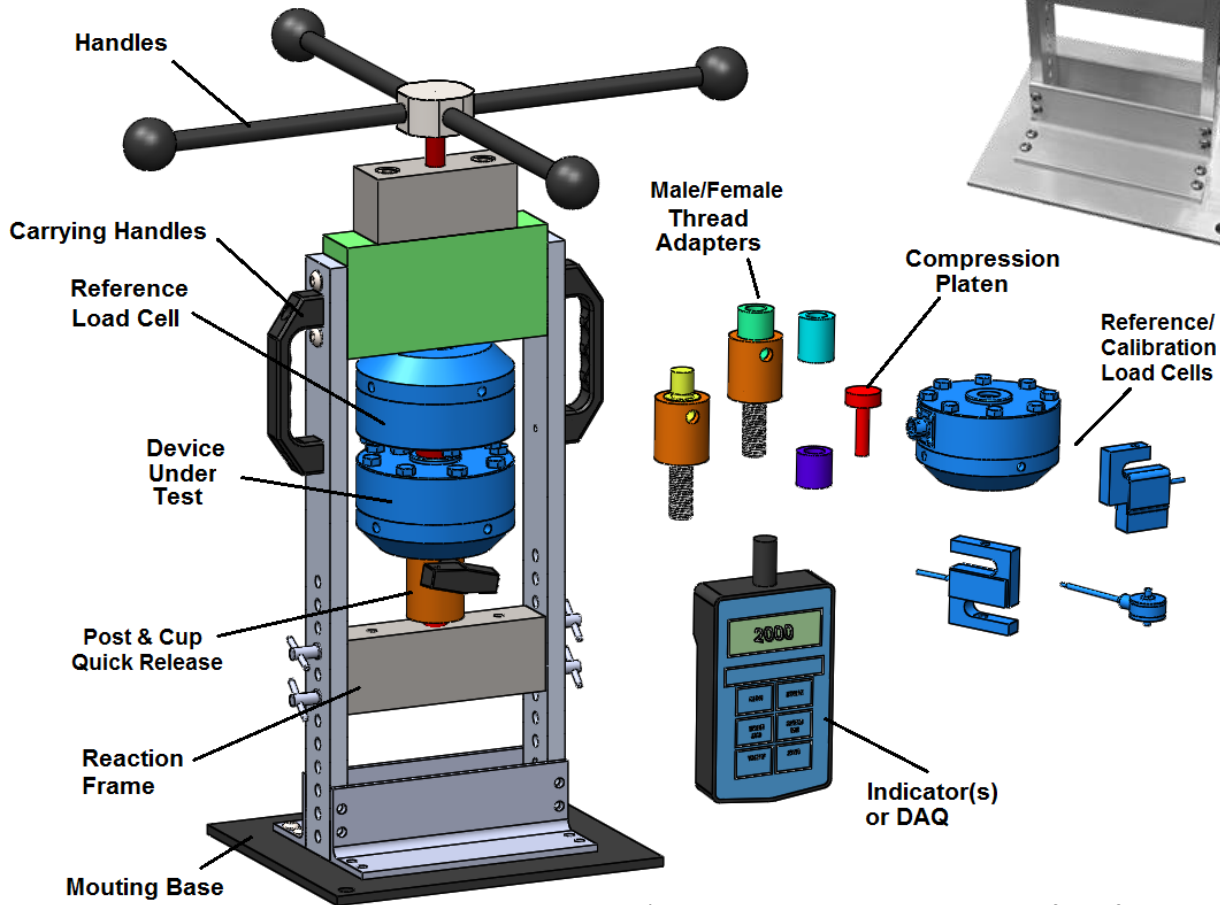




Force Verification System

The **Force Verification System (FVS)** is a portable high force capacity frame and accessories designed to apply tension and compression forces to load cells with high resolution and accuracy. The system features a reaction frame, manual actuator, thread/adaptor accessories, and optional force sensor(s) and instrumentation. The hardware can be used to verify operation of a device under test or calibrate relative to a second reference load cell.



*FVS shown with available options, for reference only.

System Advantages

- Up to 5,000lbf capacity. Up to ~0.006" per turn High Resolution Actuator.
- Portable, Lightweight, and Accurate.
- Quick Change Thread Adapters with Adjustment.



Force Verification System

System Technical Specifications

Actuation	Manual, High Resolution, ~0.006" per turn for 1k and 2.5k, ~0.041" per turn 5k
Force Capacity	±1klbf, ±2.5klbf, and ±5klbf Both Tension and Compression Capability
Size	8.0 x 10.0 x 20.5in, Under 20lbs

System Options

- Custom Sizes, Fixtures, and Materials
- Calibration Grade Load Cells
- Digital Indicators
- Data Logging



±1000lbf System

±2500lbf System

± 5000lbf System

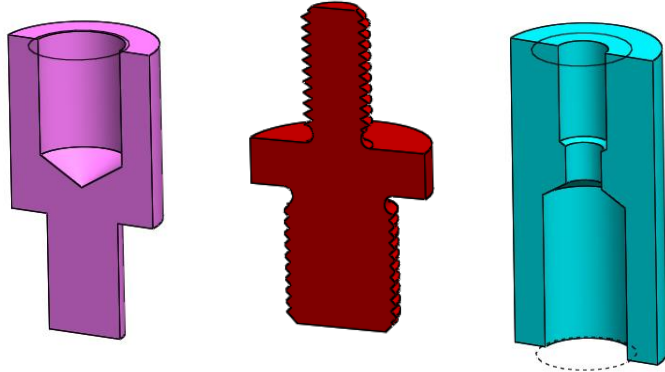
Contact Minnesota Measurement Engineering to
configure a system that fits your application.



Accessories

Thread Adapters

Female-Male
Male-Male
Female-Female



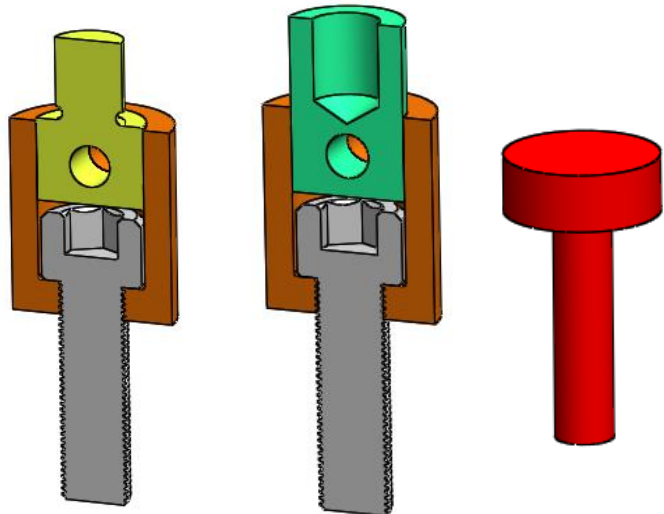
Common Adapter Sizes:
(Specify at time of order)

6-32, 10-32, 1/4-28, 3/8-24, 1/2-20, 5/8-18,
M6, M8, M10, M12, Pre-Configured Kit

Post Adapters and Platens

Post-Male
Post - Female
Compression Platens

(Screw and Cup not included)



Common Adapter Sizes:
(Specify at time of order)

6-32, 10-32, 1/4-28, 3/8-24, 1/2-20, 5/8-18,
M6, M8, M10, M12, Pre-Configured Kit

Pre-configured kits with common sizes available.