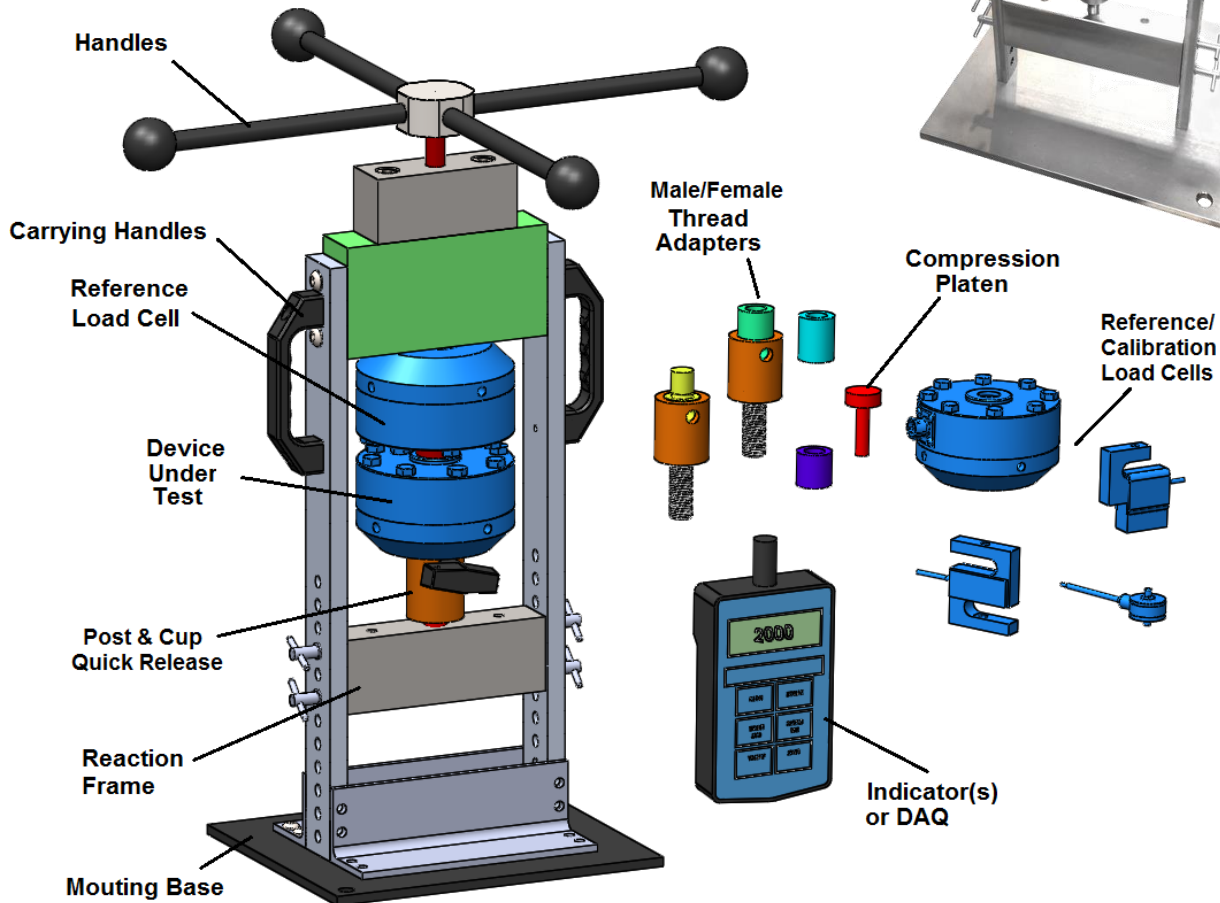




# Force Verification System

The **Force Verification System (FVS)** is a portable high force capacity frame and accessories designed to apply tension and compression forces to load cells with high resolution and accuracy. The system features a reaction frame, manual actuator, thread/adaptor accessories, and optional force sensor(s) and instrumentation. The hardware can be used to verify operation of a device under test or calibrate relative to a second reference load cell.



\*FVS shown with available options, for reference only.

## System Advantages

- Up to 3,000lbf capacity. 0.006" per turn High Resolution Actuator.
- Portable, Lightweight, and Accurate.
- Quick Change Thread Adapters with Adjustment.



# Force Verification System

## System Technical Specifications

Actuation	Manual, High Resolution, 0.006" per turn
Force Capacity	$\pm 500\text{ lbf}$ , $\pm 1\text{ k lbf}$ , Hand Wheel Rotation, $\pm 2\text{ k lbf}$ , and $\pm 3\text{ k lbf}$ Handle Rotation, Both Tension and Compression Capability
Size	8.0 x 9.5 x 20.5in, Under 20lbs

## System Options

- Custom Sizes, Fixtures, and Materials
- Calibration Grade Load Cells
- Digital Indicators
- Data Logging



$\pm 1000\text{ lbf}$  System



$\pm 3000\text{ lbf}$  System

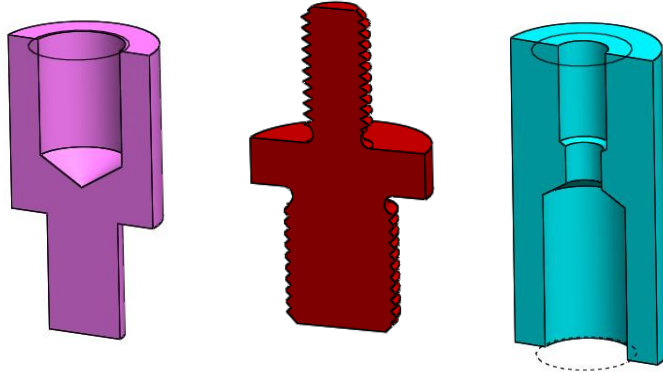
Contact Minnesota Measurement Engineering to configure a system that fits your application.



# Accessories

## Thread Adapters

Female-Male
Male-Male
Female-Female



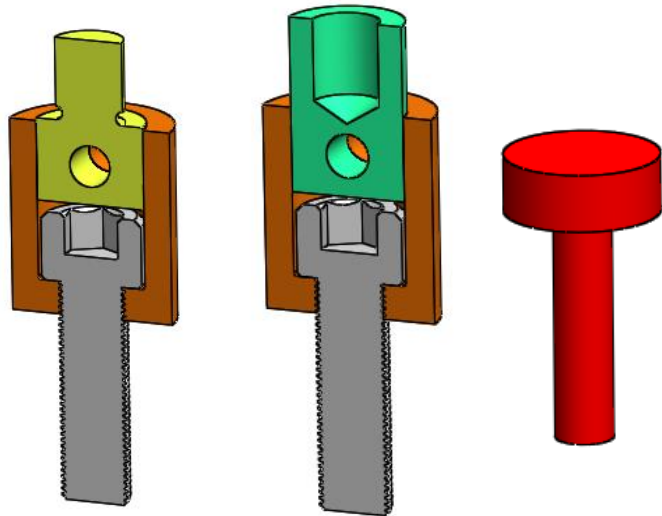
Common Adapter Sizes:  
(Specify at time of order)

6-32, 10-32, 1/4-28, 3/8-24, 1/2-20, 5/8-18,  
M6, M8, M10, M12, Pre-Configured Kit

## Post Adapters and Platens

Post-Male
Post - Female
Compression Platens

(Screw and Cup not included)



Common Adapter Sizes:  
(Specify at time of order)

6-32, 10-32, 1/4-28, 3/8-24, 1/2-20, 5/8-18,  
M6, M8, M10, M12, Pre-Configured Kit

Pre-configured kits with common sizes available.